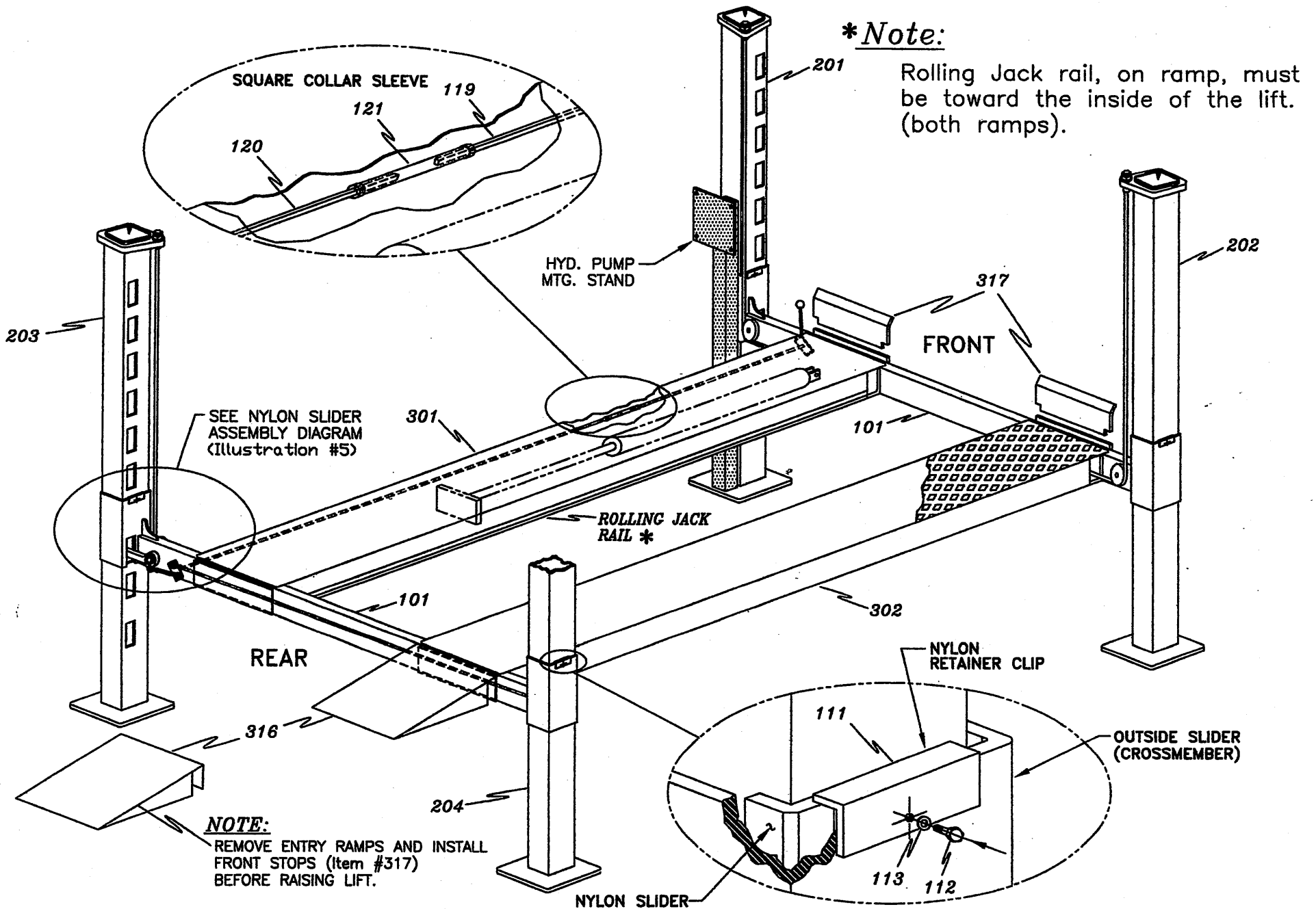
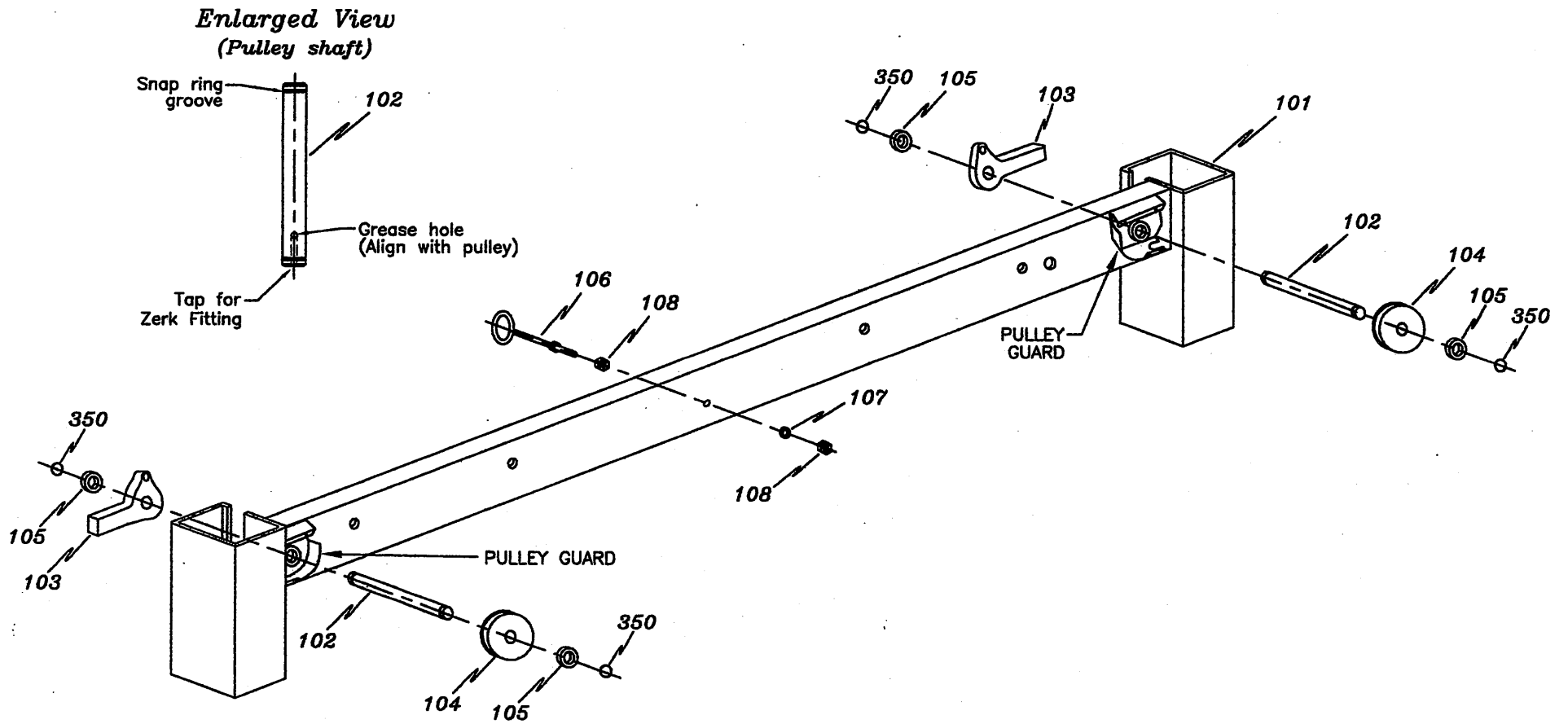


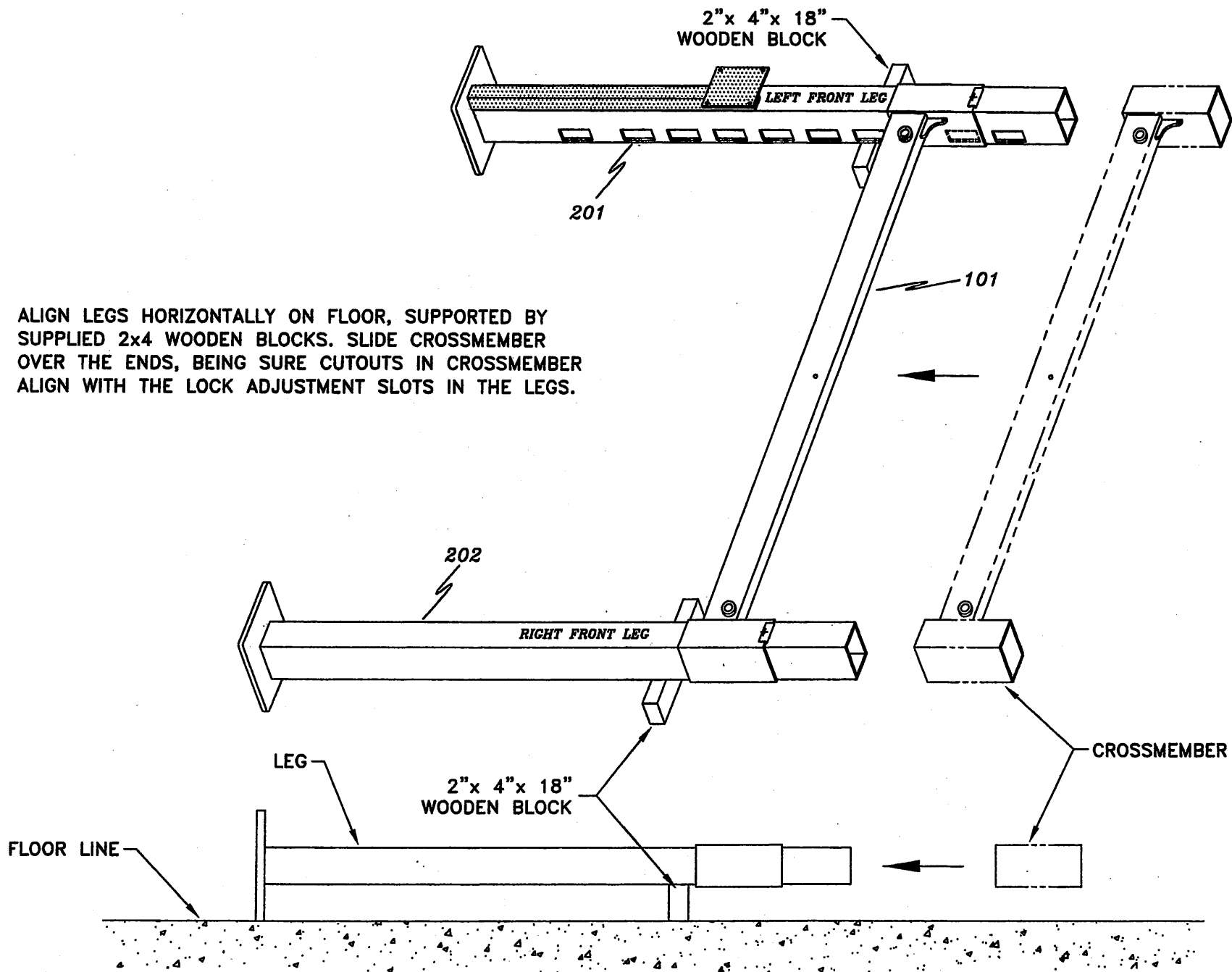
NOTE: IF YOU HAVE A "ROLLING JACK PLATFORM" or "HYDRAULIC JACK PLATFORM" - SEE ILLUSTRATIONS 12, 12A & 12B BEFORE ASSEMBLY.



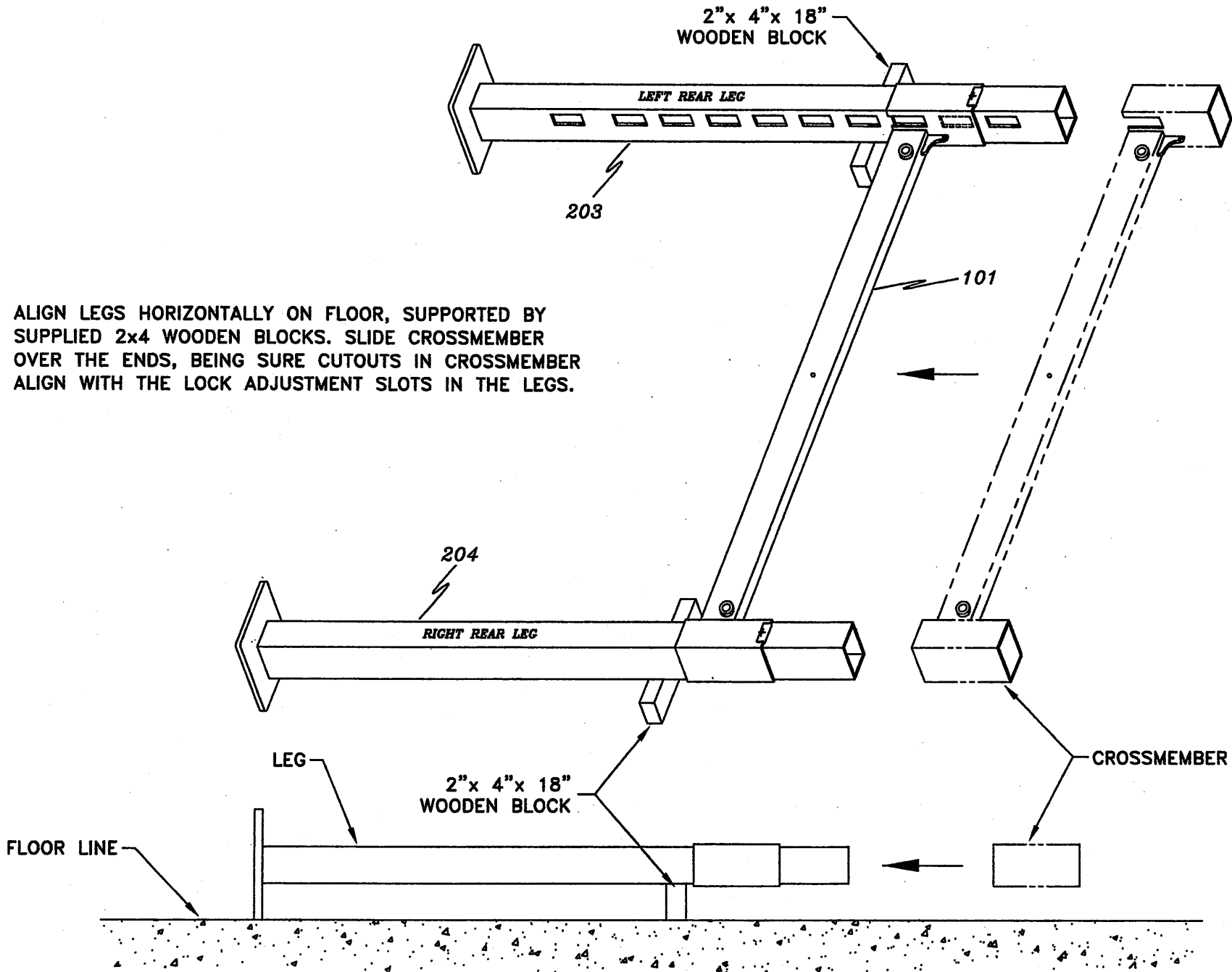
9000# LIFT DIAGRAM (ASSEMBLED) - ILLUSTRATION #1



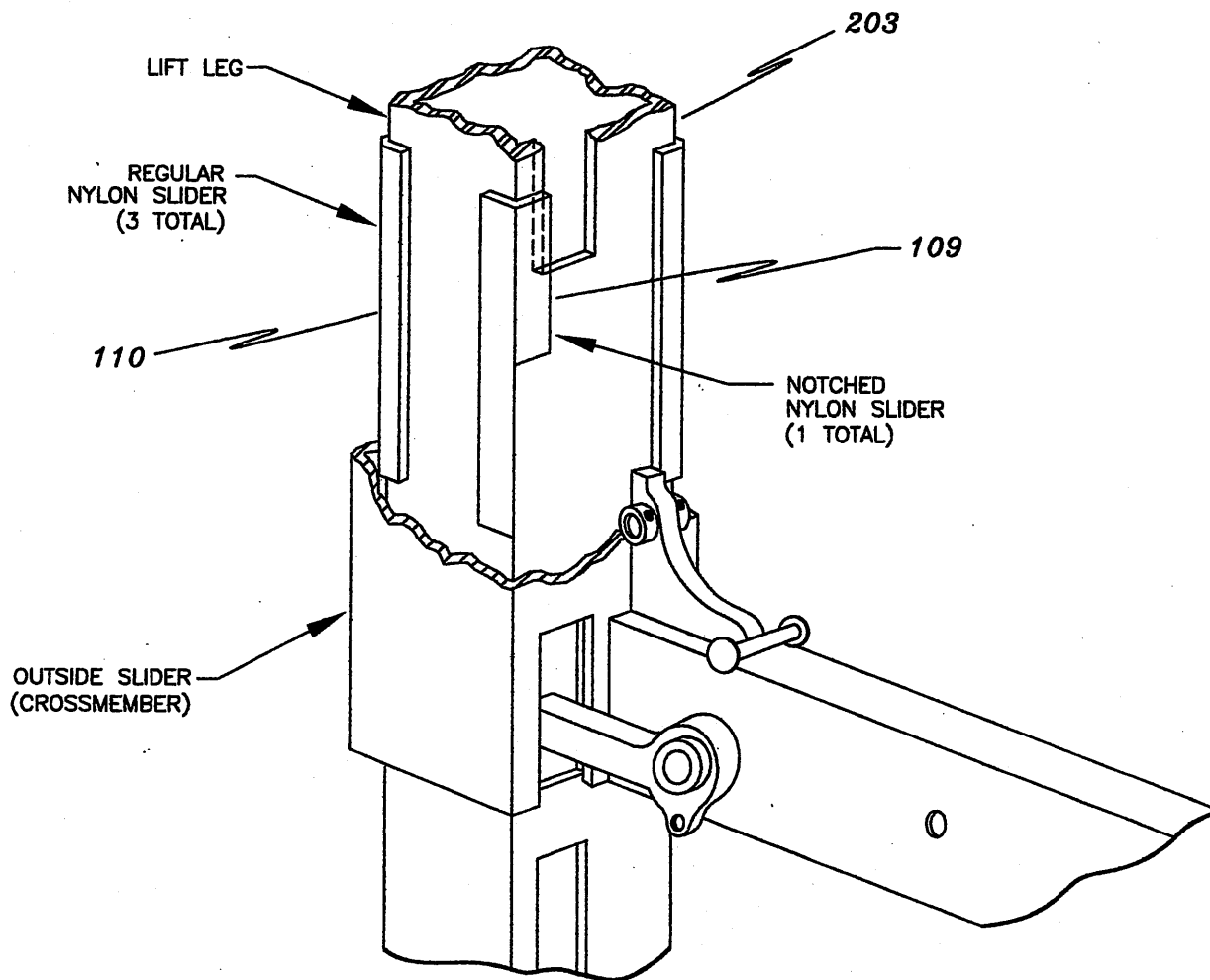
PRELIMINARY CROSSMEMBER ASSEMBLY (EXPLODED) - ILLUSTRATION #2
(BOTH CROSSMEMBERS)



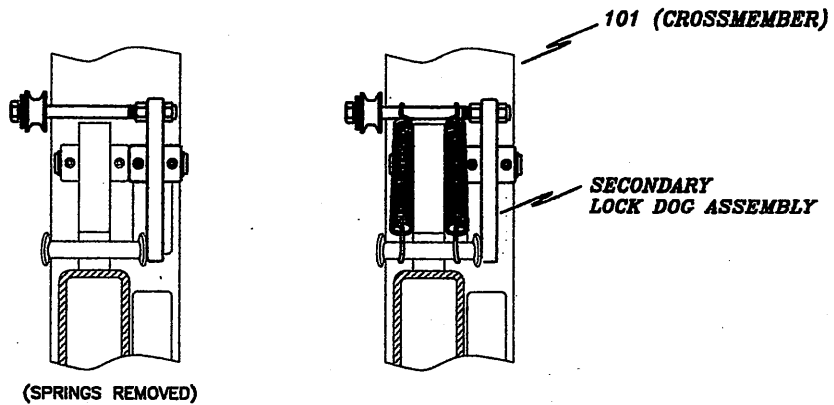
CROSSMEMBER TO LEG ASSEMBLY DIAGRAM - ILLUSTRATION #3
(FRONT ASSEMBLY)



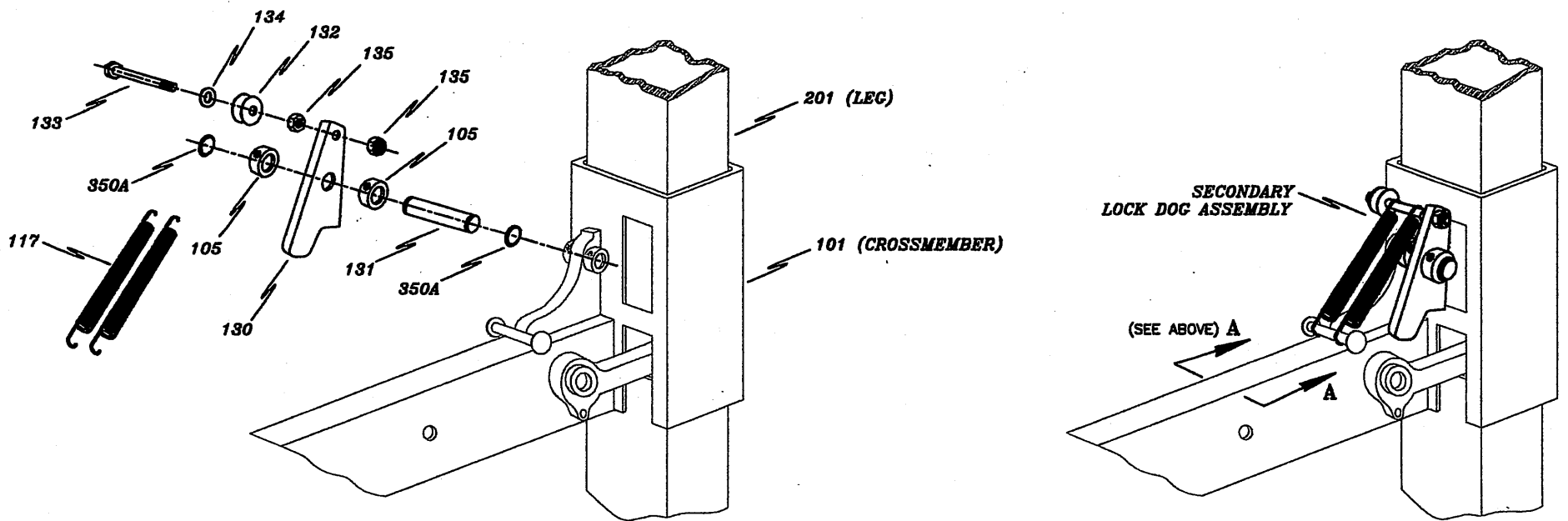
CROSSMEMBER TO LEG ASSEMBLY DIAGRAM - ILLUSTRATION #4
(REAR ASSEMBLY)



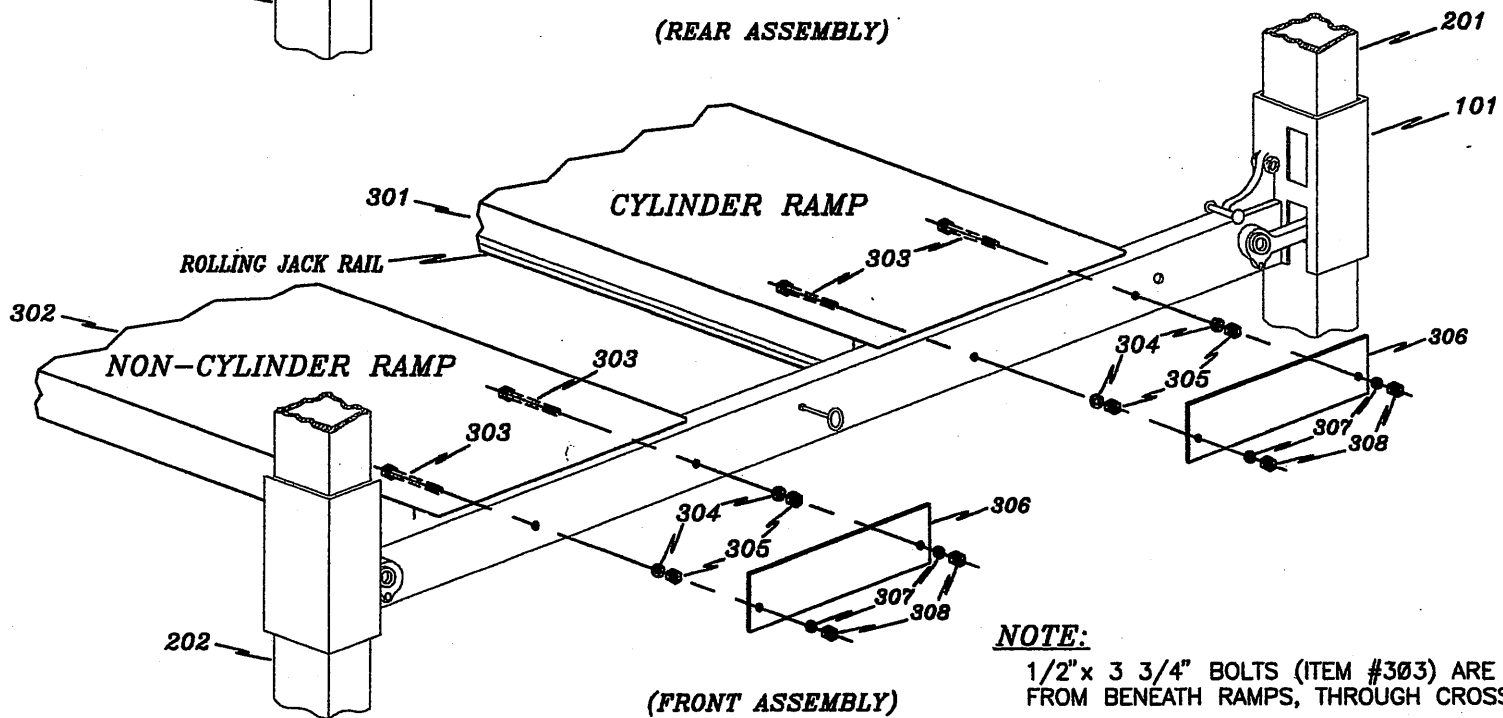
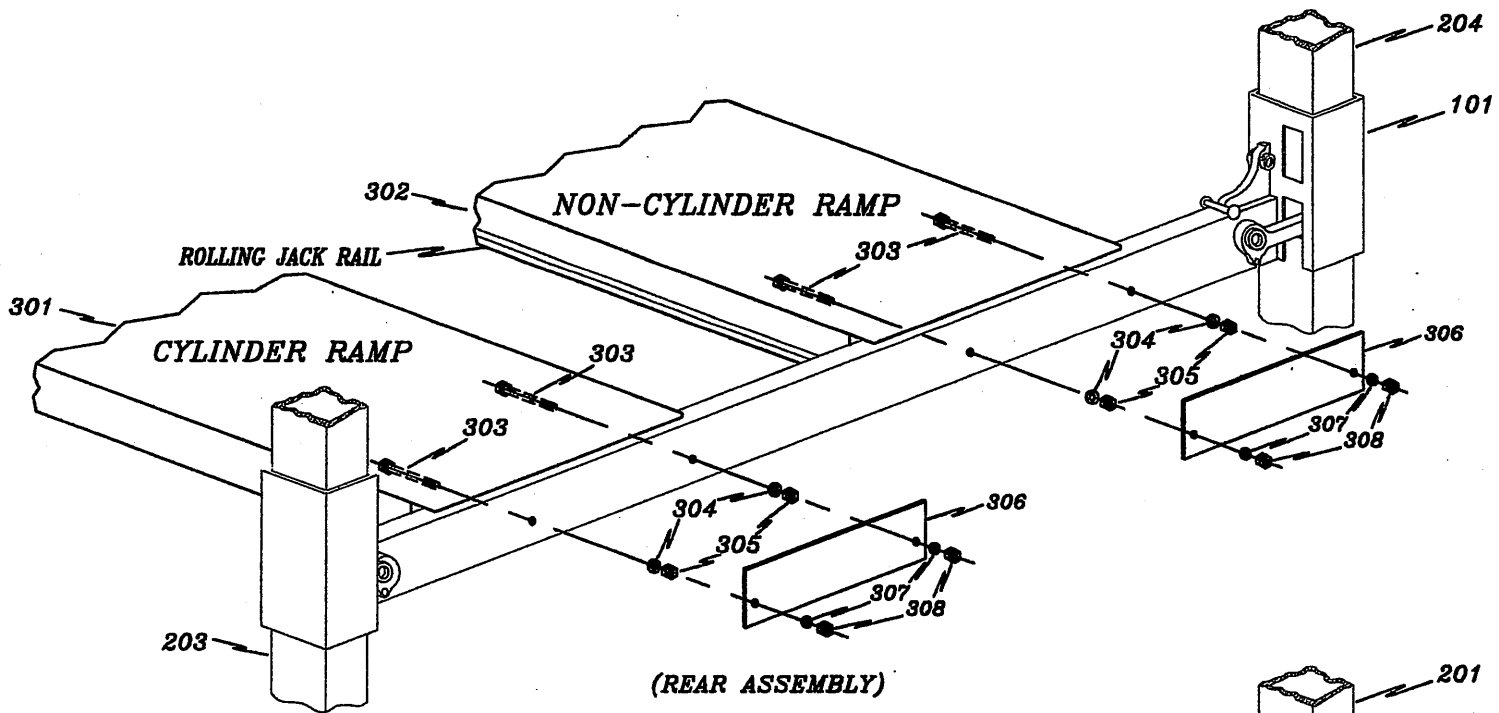
NYLON SLIDER INSTALLATION DIAGRAM - ILLUSTRATION #5
(LEFT REAR LEG SHOWN)



VIEW A-A
(FROM BELOW)



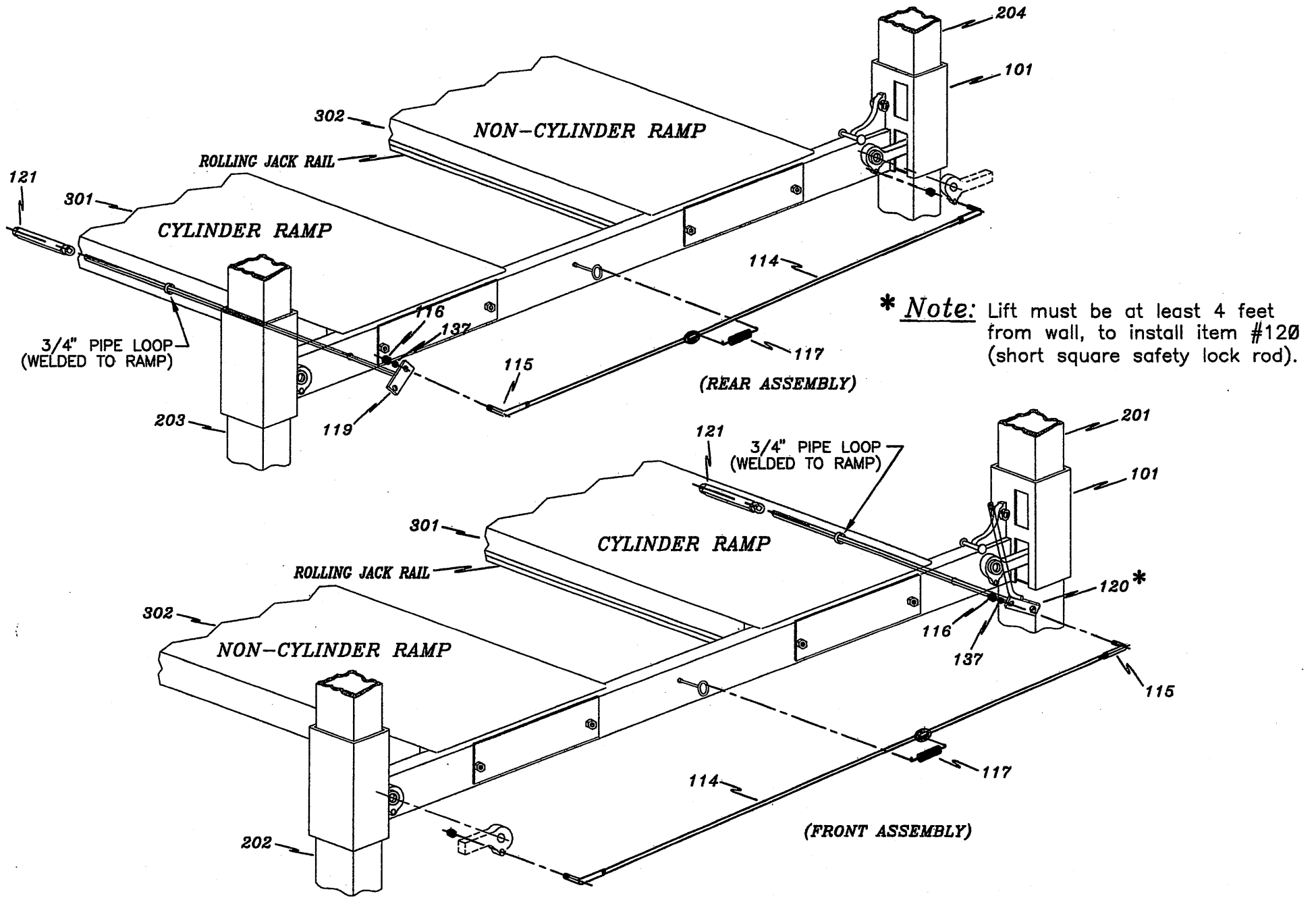
SECONDARY LOCK DOG DIAGRAM - ILLUSTRATION #5A
(ASSEMBLY/EXPLODED VIEW)



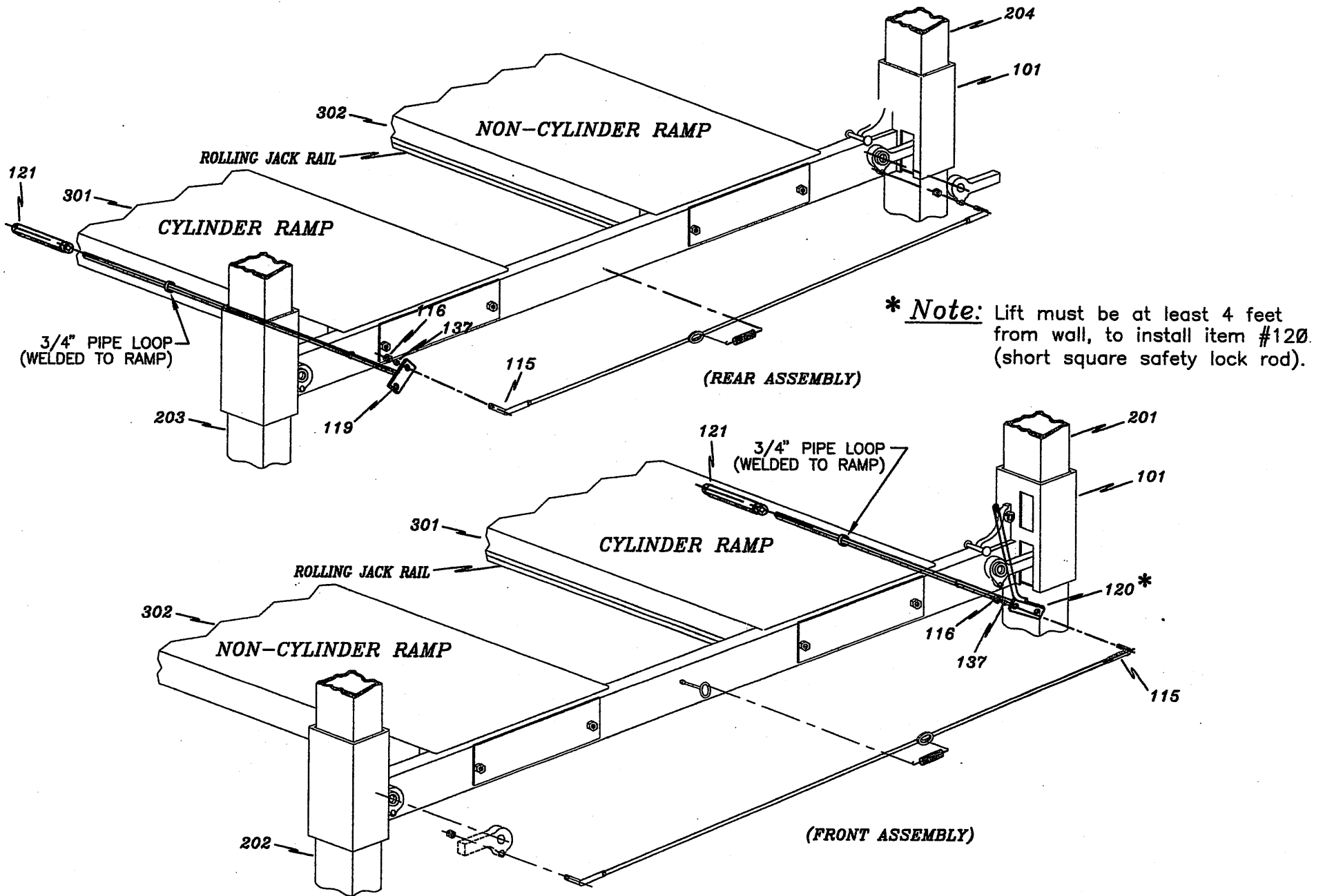
NOTE:

1/2" x 3 3/4" BOLTS (ITEM #303) ARE INSERTED FROM BENEATH RAMPS, THROUGH CROSSMEMBER.

RAMP/WHEEL STOP RETAINER PLATE TO CROSSMEMBER ASSEMBLY - ILLUSTRATION #6

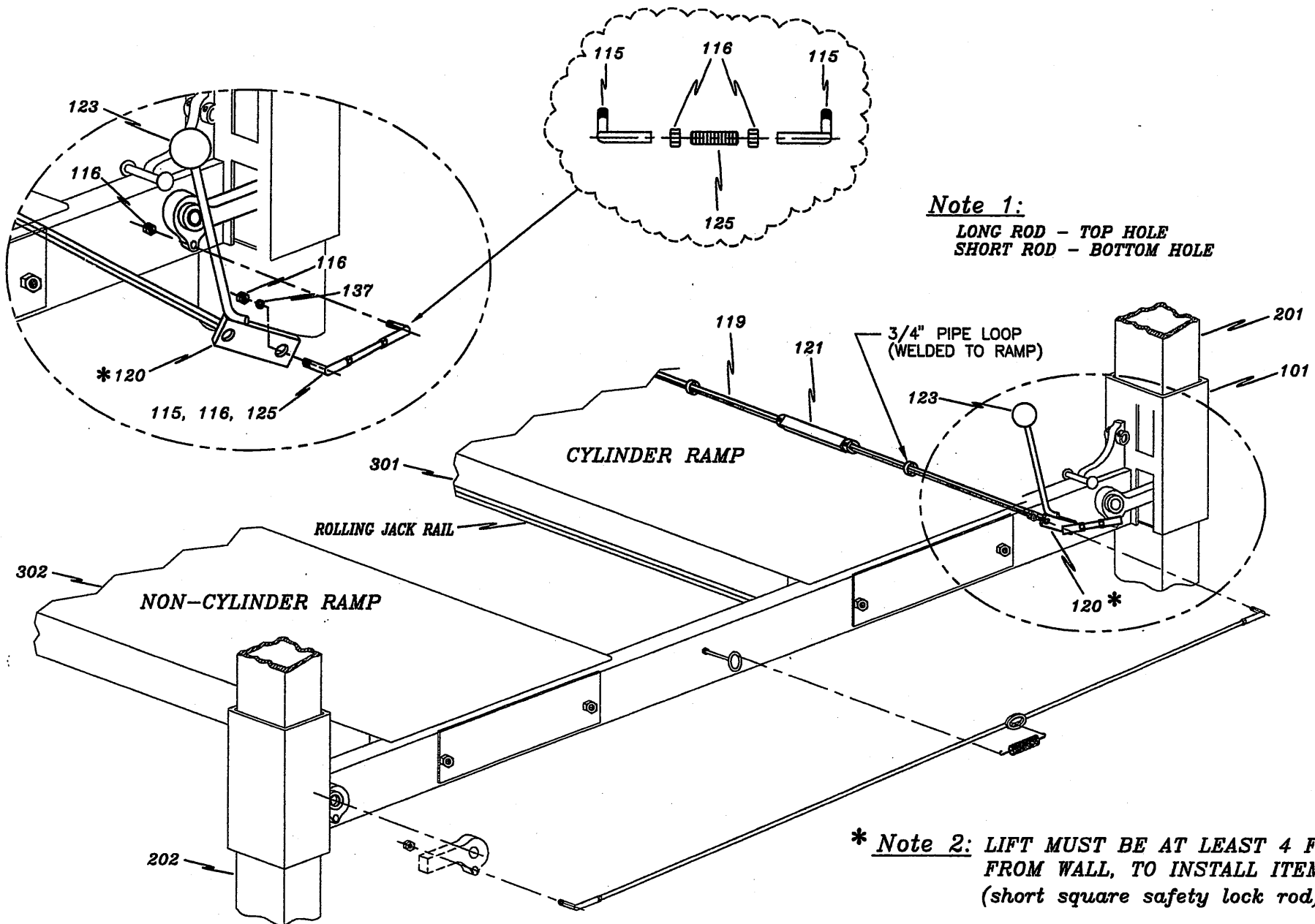


CROSSMEMBER LOCKING LINKAGE ASSEMBLY - ILLUSTRATION #7

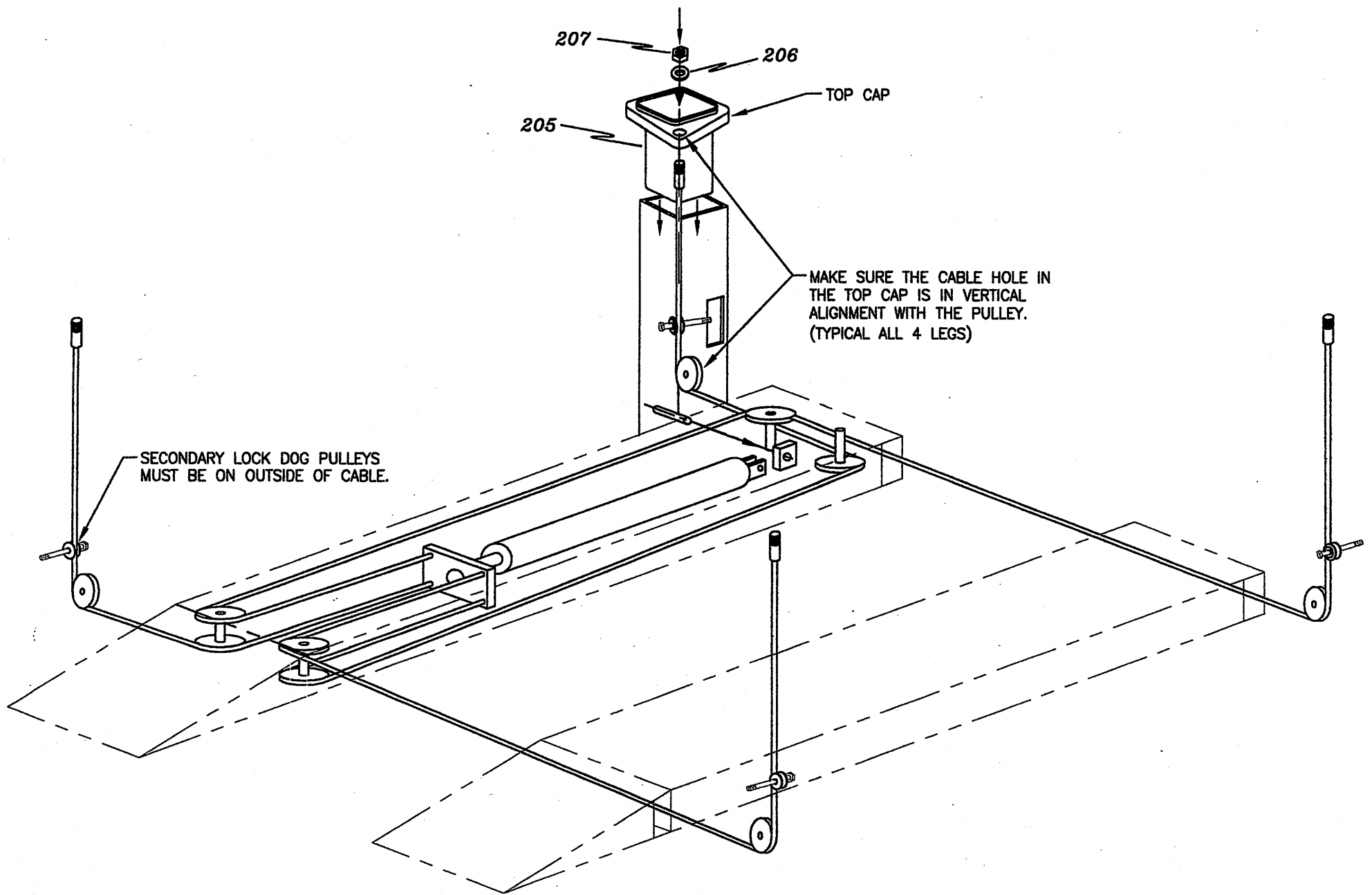


*** Note:** Lift must be at least 4 feet from wall, to install item #120. (short square safety lock rod).

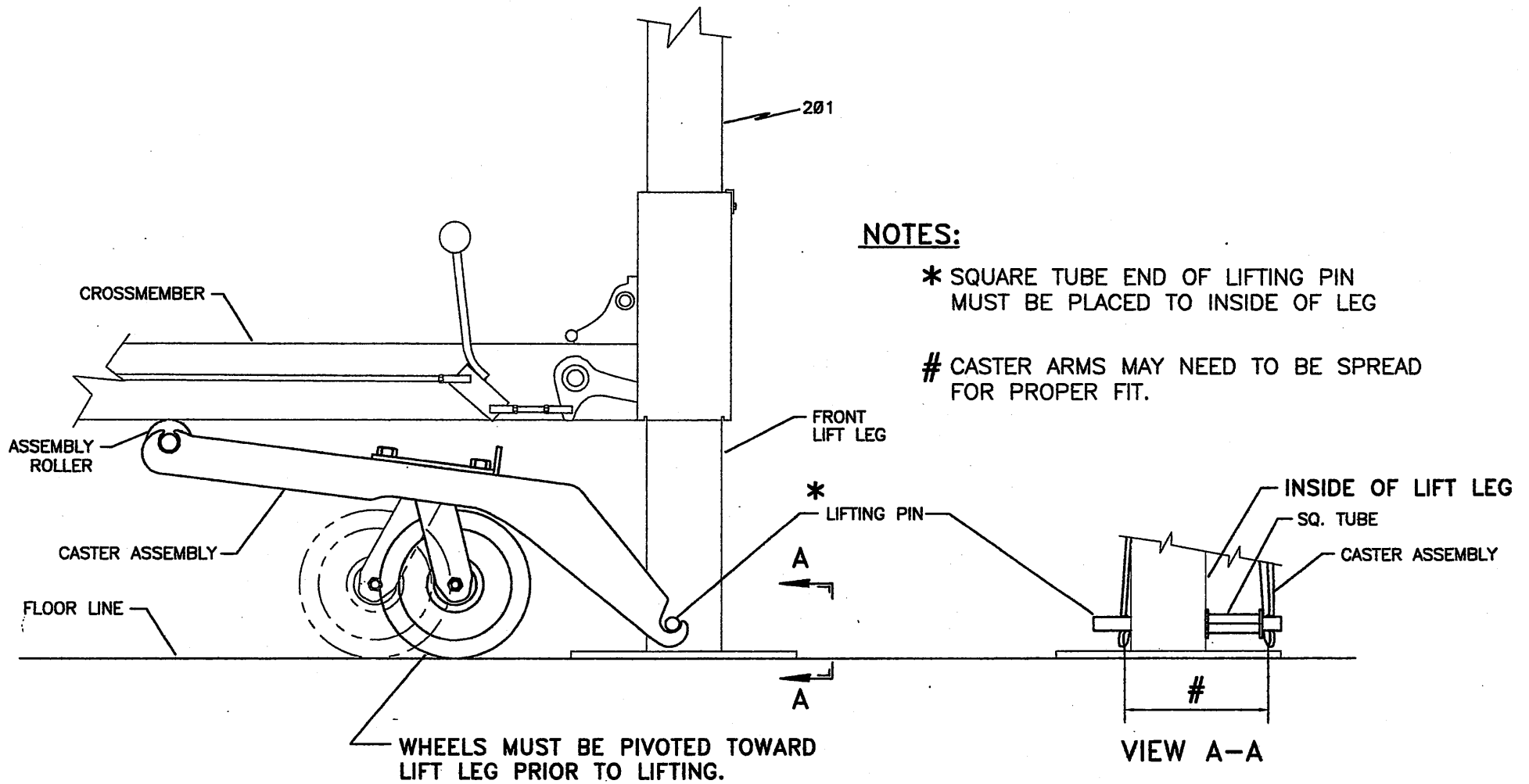
LONG/SHORT SQ. BAR SAFETY ROD ASSEMBLY - ILLUSTRATION #8



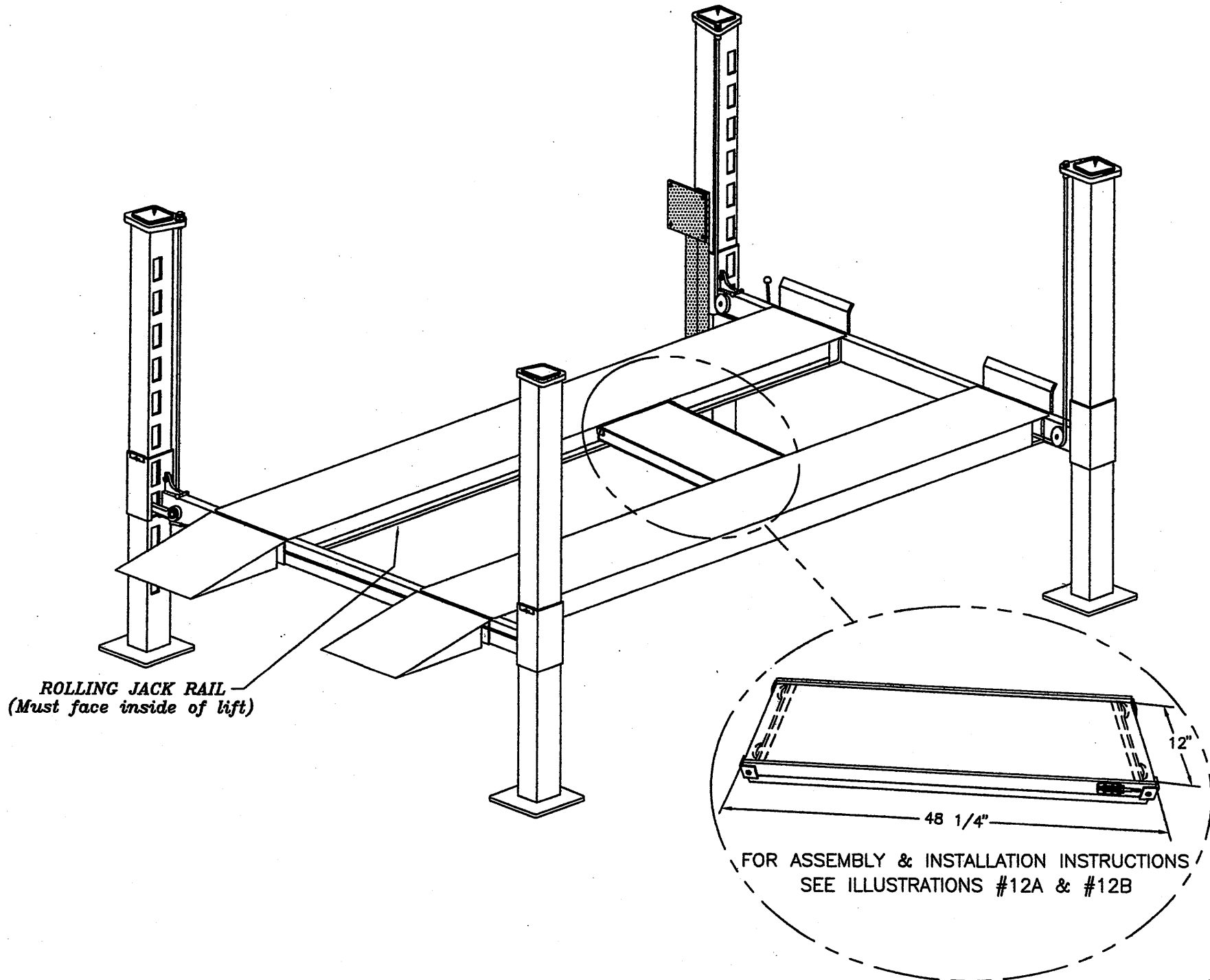
LONG/SHORT SQ. BAR SAFETY ROD ASSEMBLY - ILLUSTRATION #9



CABLE THREADING DIAGRAM - ILLUSTRATION #10



CASTER LIFTING ASSEMBLY (OPTIONAL) - ILLUSTRATION #11



ROLLING JACK PLATFORM (OPTIONAL) - ILLUSTRATION #12

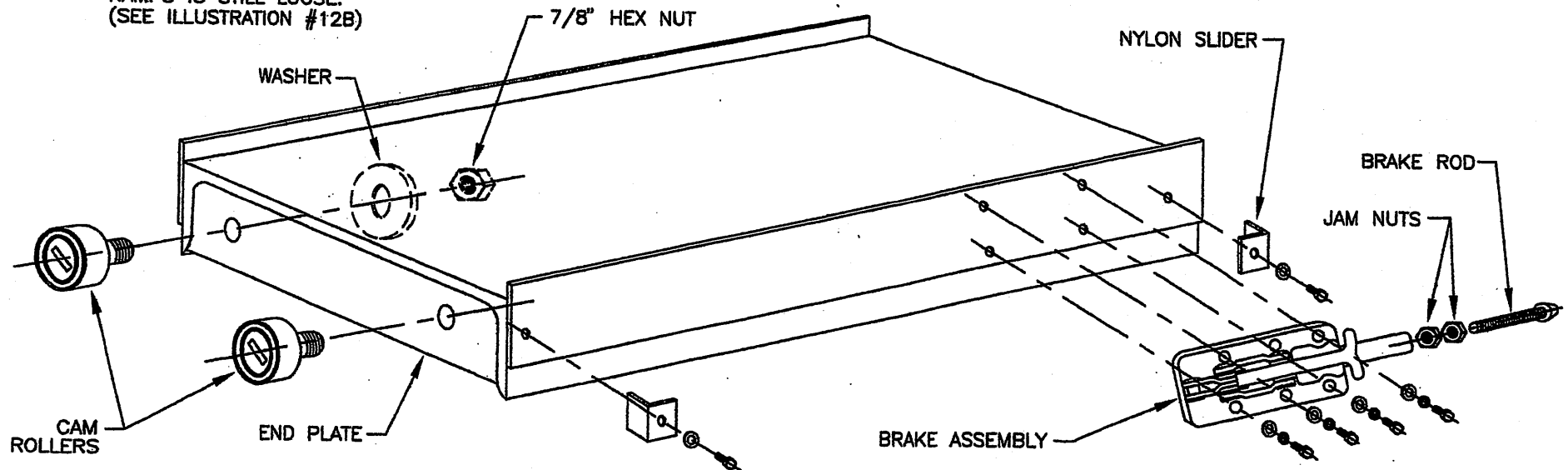
ASSEMBLY INSTRUCTIONS:

- 1.) ATTACH BRAKE ASS'Y. TO PLATFORM WITH FOUR (4) 1/4-20 x 1/2" HEX BOLTS, LOCK WASHERS & FLAT WASHERS.
- 2.) THREAD TWO (2) JAM NUTS ONTO BRAKE ROD. THREAD THE ROD INTO THE BRAKE ASSEMBLY.
- 3.) ATTACH FOUR (4) CAM ROLLERS TO PLATFORM (ROLLERS MUST BE ON THE OUTSIDE OF END PLATE) WITH WASHER AND 7/8" HEX NUT. USE A STRAIGHT SLOT SCREWDRIVER, IN THE SLOT OF THE ROLLER, TO HOLD IT WHILE TIGHTENING NUT.
- 4.) ATTACH FOUR (4) NYLON SLIDERS, ONE (1) TO EACH CORNER OF PLATFORM, WITH 1/4-20 x 1/2" HEX BOLT AND FLAT WASHER.
- * 5.) AFTER PLACING PLATFORM ON LIFT RAILS, ADJUST THE BRAKE ROD SO IT WILL HOLD THE PLATFORM IN PLACE WHEN APPLIED.

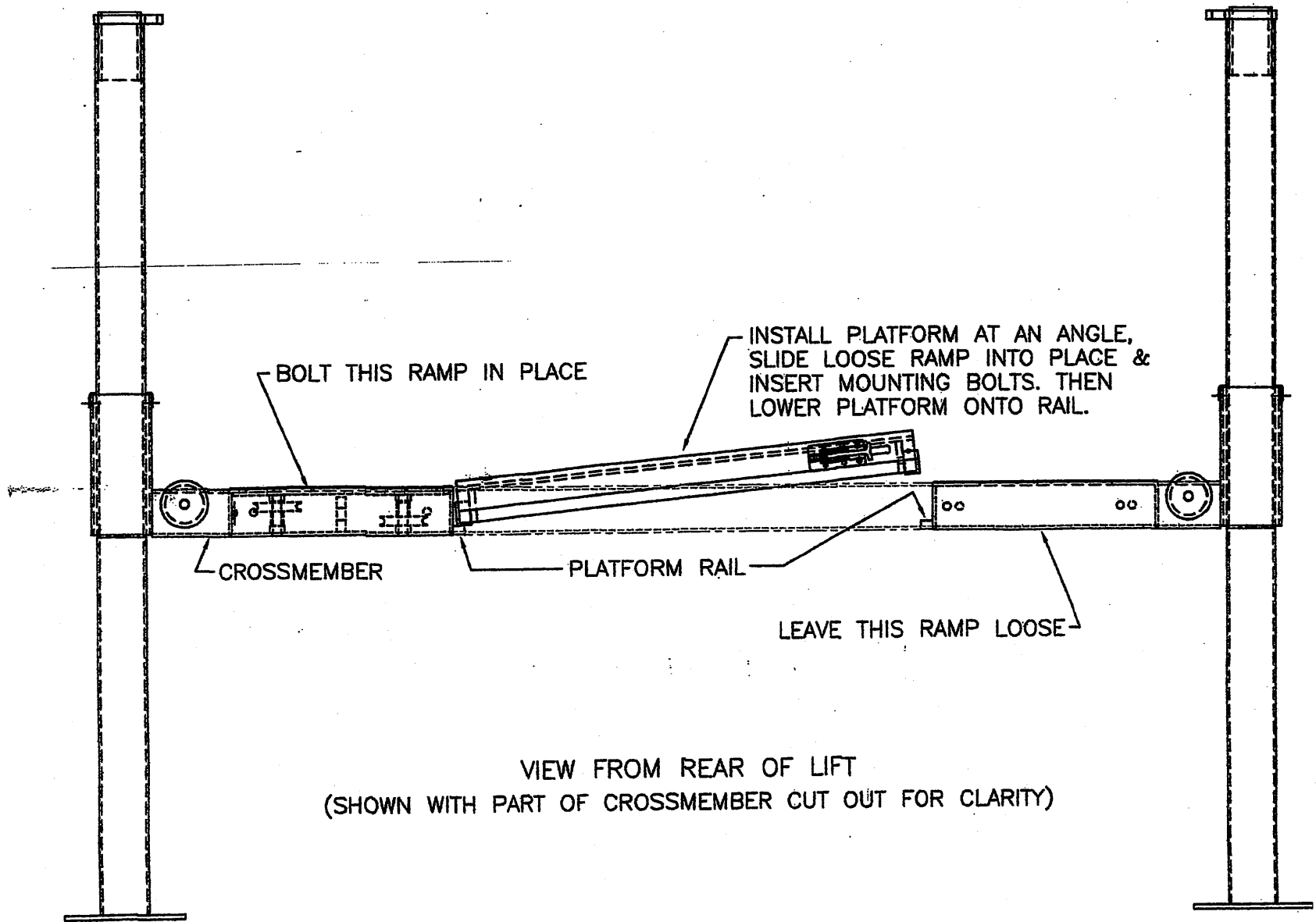
TOOLS NEEDED:

- 7/16" WRENCH
- CRESCENT WRENCH
- STR. SLOT SCREWDRIVER

* **NOTE:** PLATFORM MUST BE INSTALLED ON LIFT WHILE ONE OF THE RAMPS IS STILL LOOSE. (SEE ILLUSTRATION #12B)



ROLLING JACK PLATFORM ASSEMBLY DIAGRAM (OPTIONAL) - ILLUSTRATION #12A



ROLLING/HYDRAULIC JACK PLATFORM INSTALLATION - ILLUSTRATION #12B